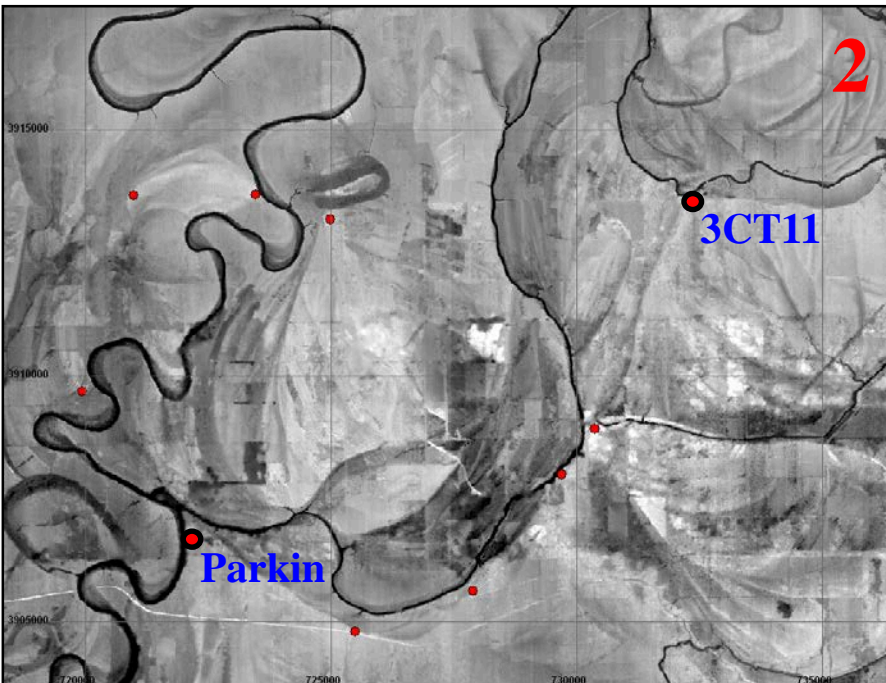
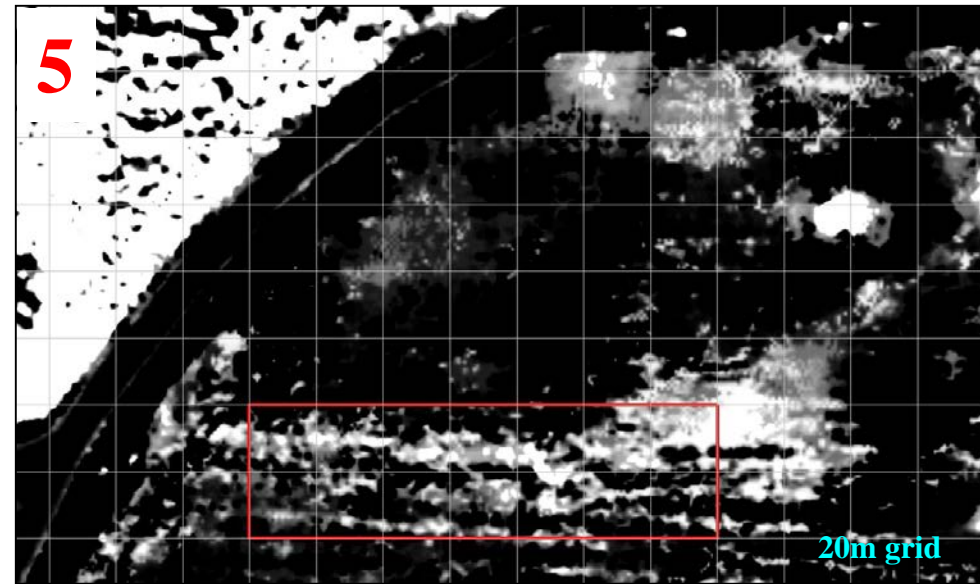
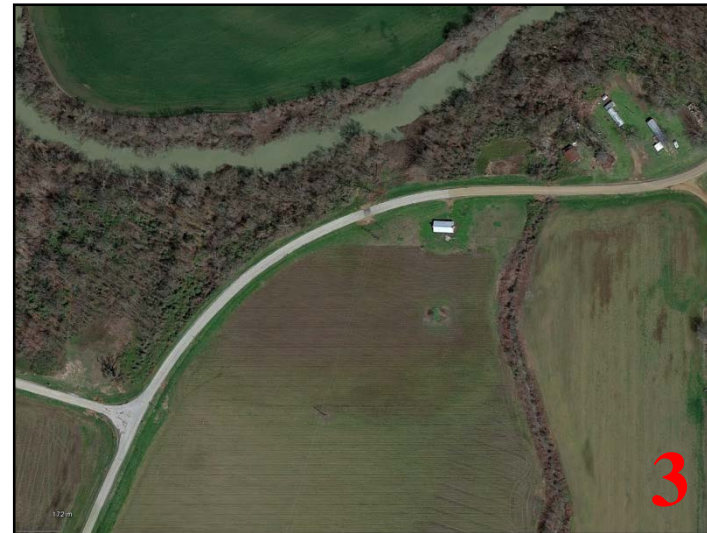
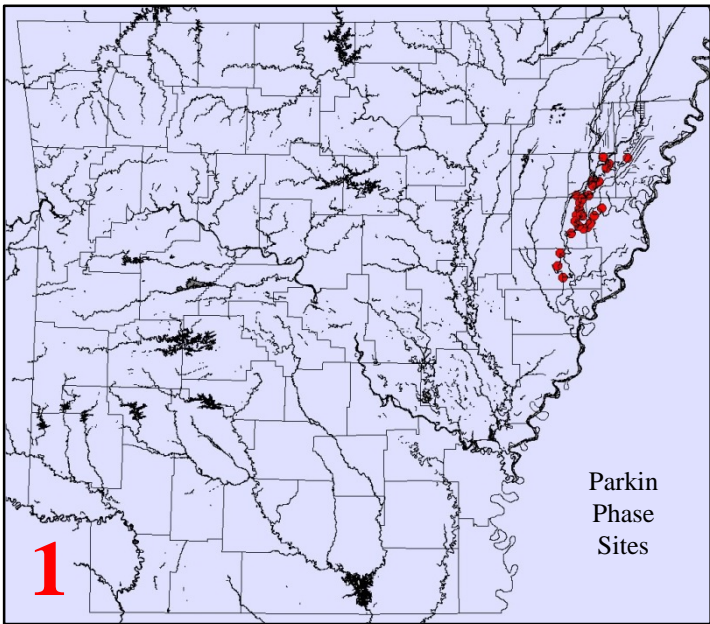
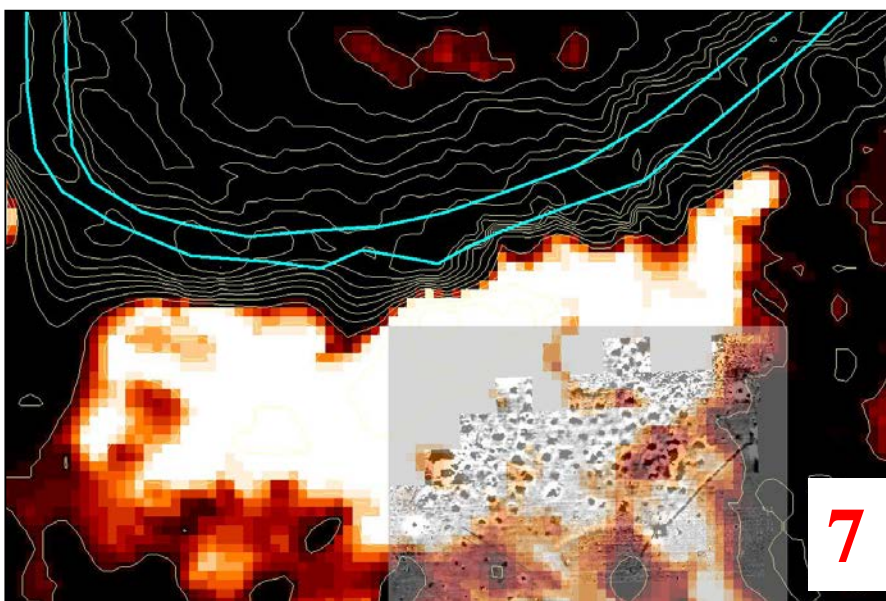


Remote Sensing and Mapping at the Parkin Phase Richards Bridge Site (3CT11)

Jami J. Lockhart, Jeffrey M. Mitchem, and Timothy Mulvihill
 Arkansas Archeological Society, 2014 Annual Meeting, October 3-5, Springdale, AR



Richards Bridge is located 12 kilometers northeast of the Parkin site on the south bank of the Tyronza River. The site was recorded during the 1940s by Phillips, Ford, and Griffin. Beginning in late 2013, mapping and geophysical surveys were conducted by AAS personnel with help from Society members and encouragement from the landowners. Results indicate numerous archeological features, including potential prehistoric/protohistoric structures. The 2.7 hectares of remote sensing data are considered to provide insights into feature type, location, size, shape, preservation, orientation, spacing, and alignment, as well as estimates of population size, density, and other elements of intrasite organization.



1. Richards Bridge is part of the Parkin Phase cultural landscape.
2. From Parkin: 28km by river, 12km straightline.
3. Richards Bridge: Tyronza R., agriculture
4. 2013 geophysics were encouraging.
5. Future geophysics to ID site edge, potential fortification.
6. Gradiometry to date. Numerous features.
7. Landform from DEM (white) indicates the probable shape of the site, which is larger than previously known.

