

**17**  
**MAR** Fri 10am-3pm  
Parkin Archeological State Park  
60 St Hwy 184 N, Parkin, AR, 870-755-2500  
**Flintknapping Demonstration**  
Join us in celebrating Archeology Month by dropping in to see an experienced flintknapper at work! Learn about American Indian tools and weapons and see firsthand how they were made in this ongoing demonstration.

**18**  
**MAR** Sat 2-3pm  
Hampson Archeological Museum State Park  
Hampson Museum, 33 Park Ave., Wilson, AR, 870-655-8622  
**Ancient Jewelry**  
Mississippians left behind ancient jewelry that provides insight about their appearance, religious and social beliefs. Join us in learning more about these American Indian's and create a necklace of your own. Fee: \$6

**21**  
**MAR** Tues 12-4pm  
University of Arkansas 4-H  
Rick Evans Grandview Prairie Nature Center,  
1685 CR35N, Columbus, AR, 870-224-5478  
**4-H Day of Archeology- Grandview Prairie**  
Open to families and youth, join Hope Bragg of Arkansas 4-H as she leads youth through a series of fun, hands on activities designed to get people thinking like archeologists. Open to all, regardless of if they are in 4-H, this program will have families learning about how and why archeologists examine our past, with an emphasis on the cultures of SW Arkansas.

**23**  
**MAR** Thurs 2-3pm  
Hampson Archeological Museum State Park  
Hampson Museum, 33 Park Ave., Wilson, AR, 870-655-8622  
**JR. Archeologist Scavenger Hunt**  
Explore the museum for clues to unlocking the past of a people from long ago. Join the park interpreter to learn more about the native people from this area and how they lived.



**24**  
**MAR** Fri 10am-3pm  
Powhatan Historic State Park and JCB Center  
for Archaeological Research  
4414 Hwy 25, Powhatan, AR, 870-878-0032  
**Archeology Open House**  
Join park staff and archaeologists from the Jamie C. Brandon Center to explore an archaeological excavation and visit the historic town of Powhatan to see how archaeology comes to life!

**24**  
**MAR** Fri 7pm  
Searcy County Historical Society  
First Christian Church, Northeast Hwy 65, next to  
Simmons Bank, Marshall, AR, 479-442-3691  
**Rock Art in Searcy County**  
Dr. Emily Beahm, Station Archeologist at WRI, will present an illustrated lecture on Native American rock art in Searcy County.

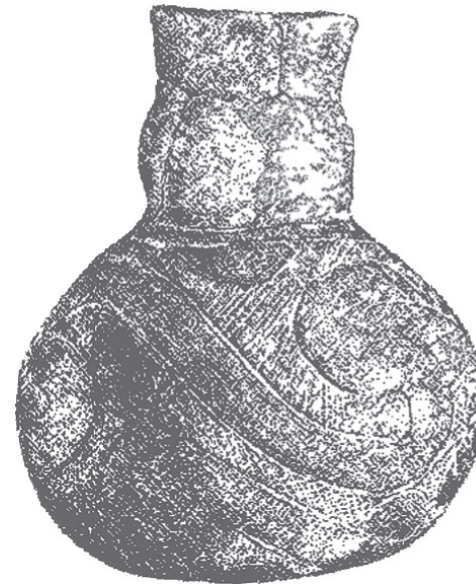
**24**  
**MAR** Fri 2-3pm  
Hampson Archeological Museum State Park  
Hampson Museum, 33 Park Ave., Wilson, AR, 870-655-8622  
**Creative Pottery**  
Hampson Archeological Museum State Park interprets a civilization that created art in many ways. One of those works of art is in the form of pottery. Join us as we learn the native way of creating pottery and decorate a vessel to take home. Fee: \$6

**25**  
**MAR** Sat 2-3pm  
Hampson Archeological Museum State Park  
Hampson Museum, 33 Park Ave., Wilson, AR, 870-655-8622  
**Native Games**  
Games are played all around the world, but have you ever thought about what American Indian's from this area did in their spare time? Join the park interpreter to explore one thing American Indian's might have done with their spare time and try your hand at the games.

**25**  
**MAR** Sat 11am-2pm  
Arkansas Archeological Survey  
2475 N Hatch Ave, Fayetteville, AR, 479-575-3961  
**Celebrate Archeology Day**  
Come tour the University of Arkansas Museum, get your artifacts ID'ed and learn about all different kinds of archeological artifacts and artifact analysis from professional archeologists.

Sponsors:  
**Arkansas Archeological Survey**  
archeology.uark.edu  
**Arkansas Archeological Society**  
arkarch.org

Support provided by the  
Bill Jordan Public Education Fund



Check out Archeology Month information and activity ideas on the Arkansas Archeological Survey's website:  
<http://archeology.uark.edu/learn-discover/archeology-month/>



Late additions to the events brochure can be found on the Arkansas Archeological Survey's calendar:  
<https://archeology.uark.edu/learn-discover/eventscalendar/>

# ARKANSAS ARCHEOLOGY MONTH EVENTS MARCH 2023

CELEBRATE ARCHEOLOGY



# ARKANSAS ARCHEOLOGY MONTH

## MARCH 2023

Please call to confirm dates & times. All events are open to the public and free unless otherwise noted.

**1-31 MAR** Tues-Sat 9am-5pm, Sun 1pm-5pm  
Ouachita Chapter of the Arkansas Archeological Society, Hot Springs  
Mid-America Science Museum,  
midamericamuseum.org/  
500 Mid America Blvd, Hot Springs, 501-767-3461  
**Celebrate Archeology!**

Visit the museum and see a display of artifacts from the Garland County area with information about local archeology. Museum admission: \$10-\$12.

**3 MAR** Fri 12-1pm  
Old State House Museum  
300 W Markham St., Little Rock, 501-324-9685  
**Unearthed in the Files: The Historical Archeology of Arkansas's Old State House**  
In the latter days of the 20th century, the Arkansas Archeological Survey performed a series of excavations on the grounds of the Old State House. Dr. Andrew Beaupré, of the Arkansas Archeological Survey-UAPB Research Station, will give a presentation on the materials recovered and offer new insights on those old excavations.

**3 MAR** Fri 6-8pm  
AR Archeological Survey/AR Historic Preservation Program  
AHPP Building, Diamond Conference Rm., 1100 North St., Little Rock, 479-575-3961  
**Archeology Jobs Panel**  
A panel of 5 archeologists representing different organizations working in archeology in and around the state will discuss jobs, resumes, tip and tricks for applying and making your application stand out, and any other job-related questions that attendees wish to pose.

**3 MAR** Fri 10am  
Spring River Gem and Mineral Club  
Conference Rm., 1100 North St., Little Rock, 479-575-3961  
**Ongoing Research on the Greenbrier site (31N1), a Later Mississippi period Town in the White River Valley**

Dr. Julie Morrow of the Arkansas Archeological Survey-ASU Research Station will present on current research relating to the Greenbrier archeological site.

**4 MAR** Sat 10am-3pm  
PJ Ahern Museum, Texarkana  
403 Laurel St, Texarkana, 479-575-3961  
**Celebrate Archeology Day**  
Come learn about all different kinds of archeological artifacts and artifact analysis from professional archeologists, get your artifacts ID'ed and learn about 2023's Training Program in Archeology in De Queen.

**5 MAR** Sun 5:30-6pm, on Mar 5, 12, 19, and 26  
Prairie Grove Battlefield State Park  
506 East Douglas Street, Prairie Grove, 479-846-2990  
**Curator Corner**  
Join the curator for a discussion of a selected artifact found on the battlefield, ask questions, and discover the history and importance of Prairie Grove Battlefield's collection.

**7 MAR** Tues 7pm  
Ouachita Chapter of the Arkansas Archeological Society  
Board Room, Arkansas School for Mathematics, Sciences, & the Arts, Hot Springs, 501-961-2420  
**March meeting, "Celebrate Archeology!"**  
Presentation on archeology as part of our monthly Ouachita Chapter meeting.

**8 MAR** Wed 6pm  
Fayetteville Public Library  
401 W. Mountain St., Fayetteville, 479-856-7250  
**Effigy Pots: Corn Gods to Frogs—a Tribal Perspective**  
Ms. Carrie Wilson (Quapaw Nation) will discuss ancient effigy pots from Arkansas and surrounding areas, presenting a new perspective and interpretations of common themes.

**11 MAR** Sat 9am-2pm  
Arkansas Archeological Survey-UAM Station,  
870-265-5832  
Lake Village Welcome Center, 3697 Hwy 65-82,  
Lake Village, AR  
**Mississippi Mound Trail Tour with Dr. Jessica Kowalski**  
The tour will visit a few of the mounds near Lake Village, AR, and Greenville, MS, and end at the Winterville site around lunch time. Guests should RSVP with the UAM station and bring their own lunch.

**11 MAR** Sat 10-11am and 2-3pm, on Mar 11, 17, and 22  
Hampson Archeological Museum State Park  
Hampson Museum, 33 Park Ave., Wilson, AR, 870-655-8622  
**Piecing Together History**  
American Indians left behind their stories in many ways; some told their stories on cave walls while others, like at the Nodena site, left their stories on vessels like bowls or bottles. Become a Jr. Archeologist and help us piece the past back together.

**11 MAR** Sat 9am-12pm  
Arkansas Archeological Survey – PBRS  
Plum Bayou Mounds Archeological State Park,  
490 Toltec Mounds Road, Scott, AR, 501-961-2420  
**Lab Day**  
Interested in seeing artifacts found at Plum Bayou Mounds Archeological State Park? Come and assist us in inventorying and rehousing our collections. Please contact Katy Gregory (kwyg001@uark.edu) for any questions and to let us know if you will be coming.

**11 MAR** Sat 1:30pm  
Mississippi River State Park  
Sterling Town site, Mississippi River State Park,  
2955 Hwy 44, Marianna, AR, 870-295-4040  
**Stories from Sterling: A Lost Community on the St. Francis River**  
Join Dr. Andrew Beaupré and Park Interpreter Cara Curtis for "Stories of Sterling: A Lost Community on the St. Francis River" to tour the site of Sterling, Arkansas and see how traces of the past are found in the present.

**14 MAR** Tues 3:30pm  
Preserve Arkansas  
www.PreserveArkansas.org, 501-372-4757  
**2023 Women in Preservation Virtual Speaker Series: Dr. Paige Ford**  
This monthly series features women from different backgrounds who are working to save historic places. Dr. Ford, of the Arkansas Archeological Survey at Plum Bayou Mounds, will speak about her career path, her work as a station archeologist, community involvement and outreach efforts, and more! Online Zoom Webinar; registration is free. More info: rpatton@preservearkansas.org or paigef@uark.edu

**15 MAR** Wed 6pm  
The Central Mississippi Valley Chapter of the Arkansas Archeological Society  
Arkansas State University Museum, 320 University Loop, Jonesboro, AR, 870-930-7163  
**Effigy Pots: Corn Gods to Frogs—a Tribal Perspective**  
Quapaw Tribal elder Carrie Wilson will share her ideas about why particular animals were depicted on Mississippi period (AD 1200-1500) ceramic vessels.

**15 MAR** Wed 6pm  
Northwest Arkansas Land Trust  
1725 Smoke House Trail, Fayetteville, AR, 479-575-3556  
**Program: History and Cultural Resources Associated with NWALT**  
This presentation will highlight cultural resources in Northwest Arkansas, with an emphasis on properties that Northwest Arkansas Land Trust manages or owns.

**16 MAR** Thurs 6:30pm  
Ark-Homa Chapter - Arkansas Archeological Society  
Flanders Room 100, University of Arkansas, Fort Smith, AR, 479-788-7813  
**The Upcoming 2023 Society Training Program at Holman Springs**  
Dr. Carl Drexler of the Arkansas Archeological Survey-SAU Research Station will present on the upcoming 2023 Arkansas Archeological Society/Survey Training Program to be held this June at the Holman Springs site near De Queen.

