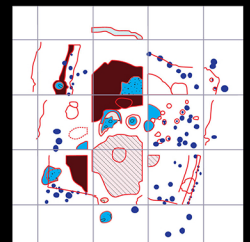
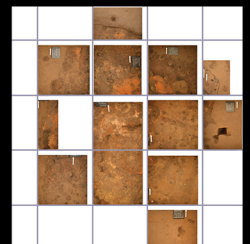
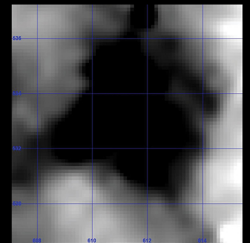
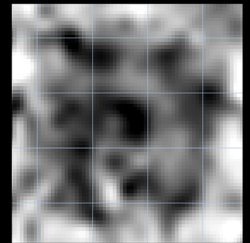
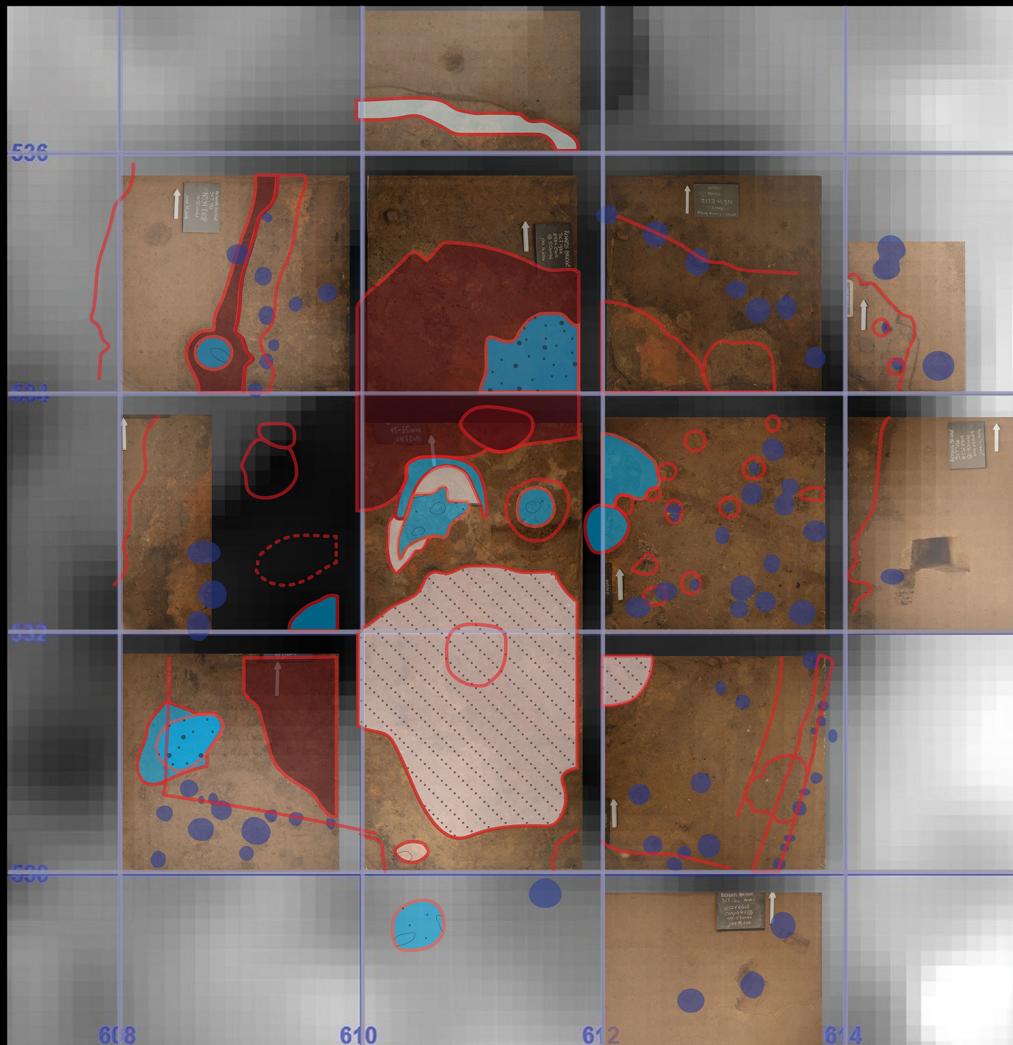


# Visualizing the Past



## Arkansas Archeology Month 2024

This precontact house is one of 60 identified at the Richards Bridge site (3CT11), a Parkin phase town in Northeast Arkansas that was occupied during the late Mississippi period, circa 1450 C.E. The images above show representations of the same archeological site using four distinct types of technology: (from top) magnetic susceptibility, electrical resistance, excavation photography and mapping.



ARKANSAS  
ARCHEOLOGICAL  
SURVEY

Arkansas Archeological Survey: [arkansasarcheology.org](http://arkansasarcheology.org)  
Arkansas Archeological Society: [arkarch.org](http://arkarch.org)